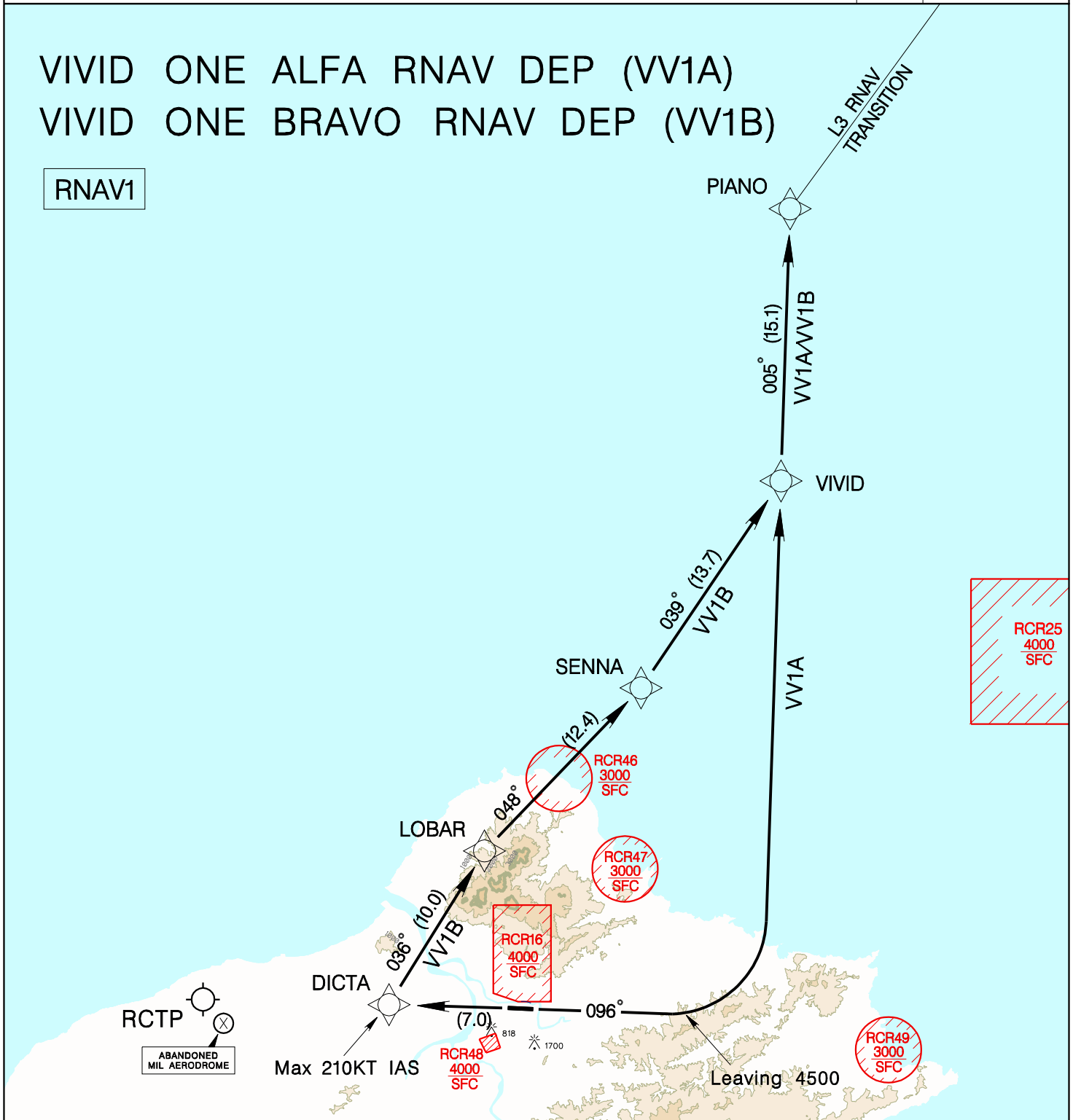


TAIPEI APP 119.7 119.6	SONGSHAN TWR 118.1	ATIS 127.4 341	VAR 4° W	
Apt Elev: 18'	Trans Level: FL130	Trans Alt: 11,000'		
BEARINGS ARE MAGNETIC; DISTANCES ARE NAUTICAL MILES; ELEVATIONS, HEIGHTS IN FEET				MSA ARP 25NM

VIVID ONE ALFA RNAV DEP (VV1A)
VIVID ONE BRAVO RNAV DEP (VV1B)

RNAV1



REV: NO CHANGE

VV1A
Climb on heading 096 until leaving 4500ft, then turn left direct to VIVID, then PIANO.

VV1B
Climb on RWY heading until 600ft, then direct to DICTA, then LOBAR, SENNA, VIVID, then PIANO.

1. Minimum climb gradient required.
RWY10: 7.4%(450ft/NM) until 4,000ft.
RWY28: 7.4%(450ft/NM) until LOBAR.
2. Caution high terrain around airport.
3. A 1700ft-high BLDG at 2.1NM south of THR 28.
4. A 818ft-high BLDG at 2NM SW of THR 10.
5. Critical DME & DME gap not surveyed.
6. Radar monitoring required.
7. Aircraft equipped with RNAV system not capable to execute the 120° turn at DICTA shall advise ATC in advance for alternate departure procedure.