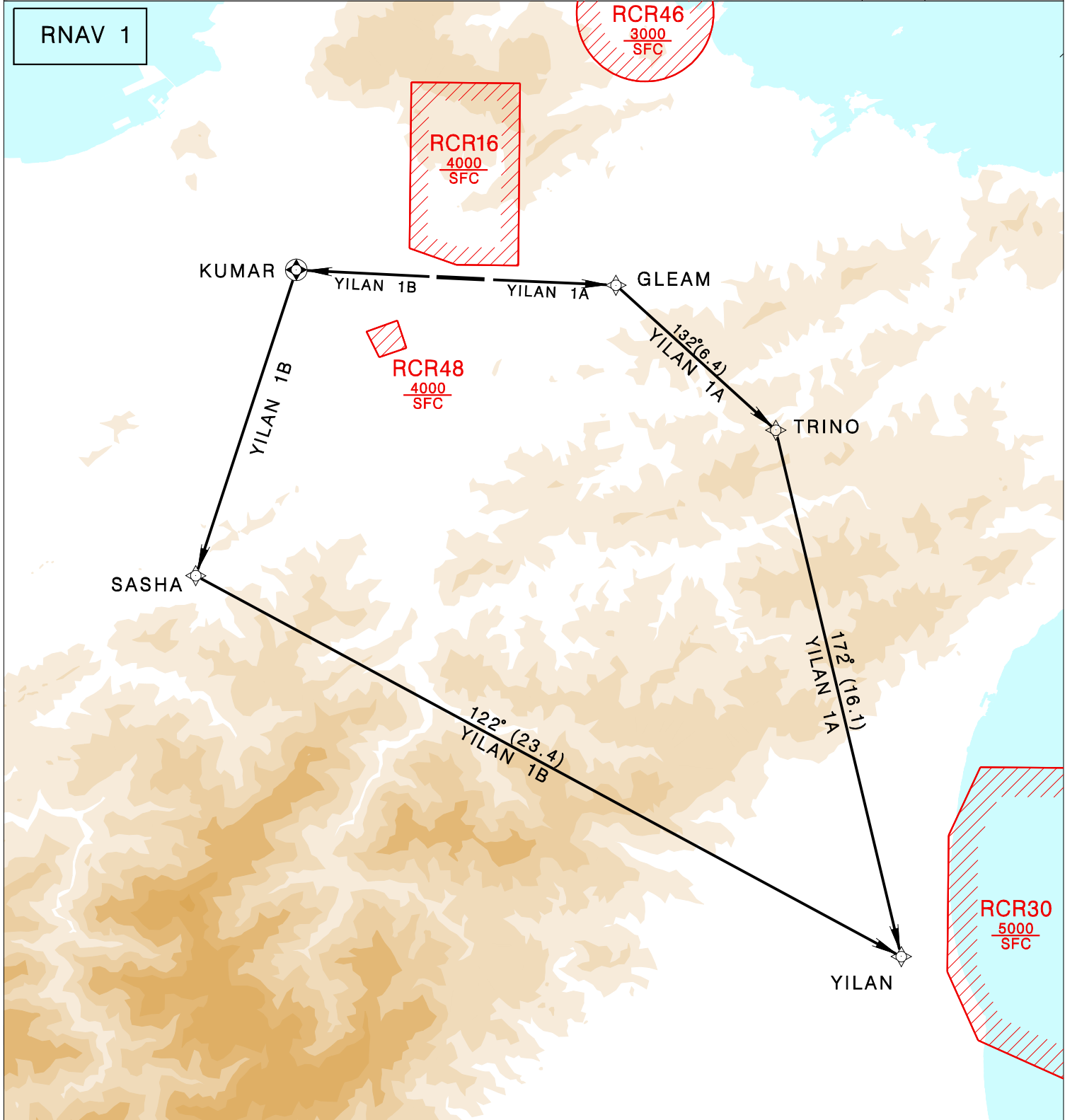


臺北/松山機場
TAIPEI/SONGSHAN AD

RCSS SID
YILAN 1A RNAV (RWY 10)
YILAN 1B RNAV (RWY 28)

TAIPEI APP 119.7 119.6	SONGSHAN TWR 118.1	ATIS 127.4 341	VAR 4° W 	 MSA ARP 25NM
Apt Elev: 18'		Trans Level: FL130		
BEARINGS ARE MAGNETIC; DISTANCES ARE NAUTICAL MILES; ELEVATIONS, HEIGHTS IN FEET				



<p>YILAN ONE ALFA RNAV DEPARTURE Climb on RWY HDG until leaving 600ft, then direct to GLEAM, TRINO, YILAN to join B591.</p> <p>YILAN ONE BRAVO RNAV DEPARTURE Climb on RWY HDG until leaving 500ft, then direct to KUMAR, SASHA, YILAN to join B591</p>	<p>NOTE</p> <ol style="list-style-type: none"> 1.YILAN 1A: Requires a minimum climb gradient of 6.1% (371ft/NM) until TRINO. 2.YILAN 1B: Requires a minimum climb gradient of 5% (304ft/NM) until YILAN or 7000ft. 3.Caution high terrain around airport. 4.A 1700ft-high BLDG at 2.1NM south of THR 28. 5.A 818ft-high BLDG at 2NM SW of THR 10. 6.Critical DME & DME gap not surveyed. 7.Radar monitoring required.
---	---

REV: NEW CHART