

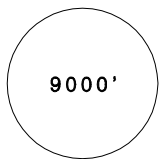
臺灣桃園國際機場

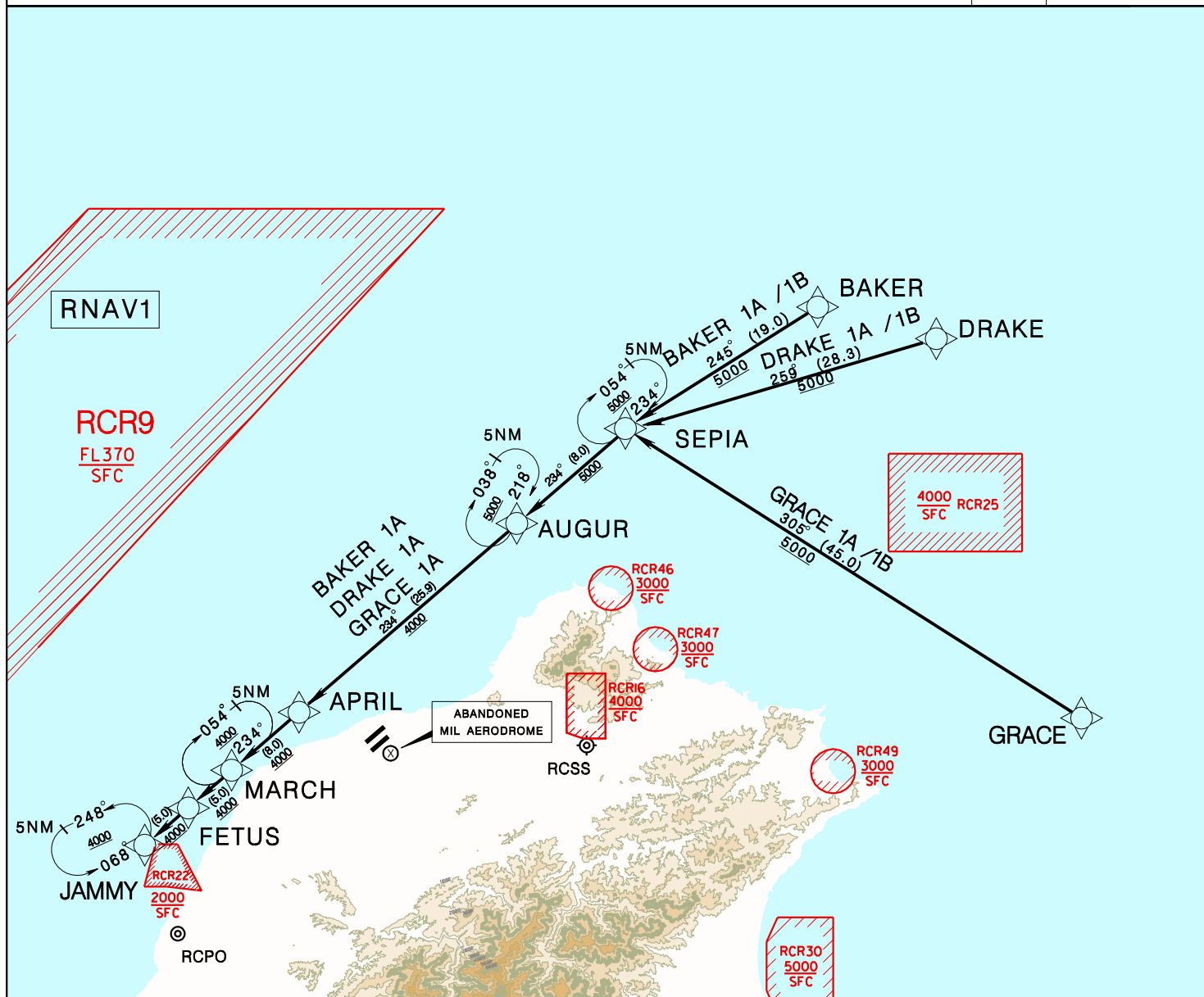
TAIPEI/TAIWAN TAOYUAN INTL AD

BAKER 1A RNAV
BAKER 1B RNAV

DRAKE 1A RNAV
DRAKE 1B RNAV

RCTP STAR
GRACE 1A RNAV
GRACE 1B RNAV

TAIPEI ACC 125.5 123.6	TAIPEI APP 125.1 128.5	ATIS 127.6	VAR 5° W	 9000' MSA ARP 25NM
Apt Elev: 108'	Trans Level: FL130	Trans Alt: 11,000'		
BEARINGS ARE MAGNETIC; DISTANCES ARE NAUTICAL MILES; ELEVATIONS, HEIGHTS IN FEET				



BAKER ONE ALFA RNAV ARRIVAL

From BAKER to SEPIA then AUGUR, APRIL, MARCH, FETUS to JAMMY.

DRAKE ONE ALFA RNAV ARRIVAL

from DRAKE to SEPIA then AUGUR, APRIL, MARCH, FETUS to JAMMY.

GRACE ONE ALFA RNAV ARRIVAL

From GRACE to SEPIA then AUGUR, APRIL, MARCH, FETUS to JAMMY.

BAKER ONE BRAVO RNAV ARRIVAL

From BAKER to SEPIA then AUGUR.

DRAKE ONE BRAVO RNAV ARRIVAL

From DRAKE to SEPIA then AUGUR.

GRACE ONE BRAVO RNAV ARRIVAL

From GRACE to SEPIA then AUGUR.

NOTE

1. Radar monitoring required.

REV: UPDATE PROC LEG COURSE