

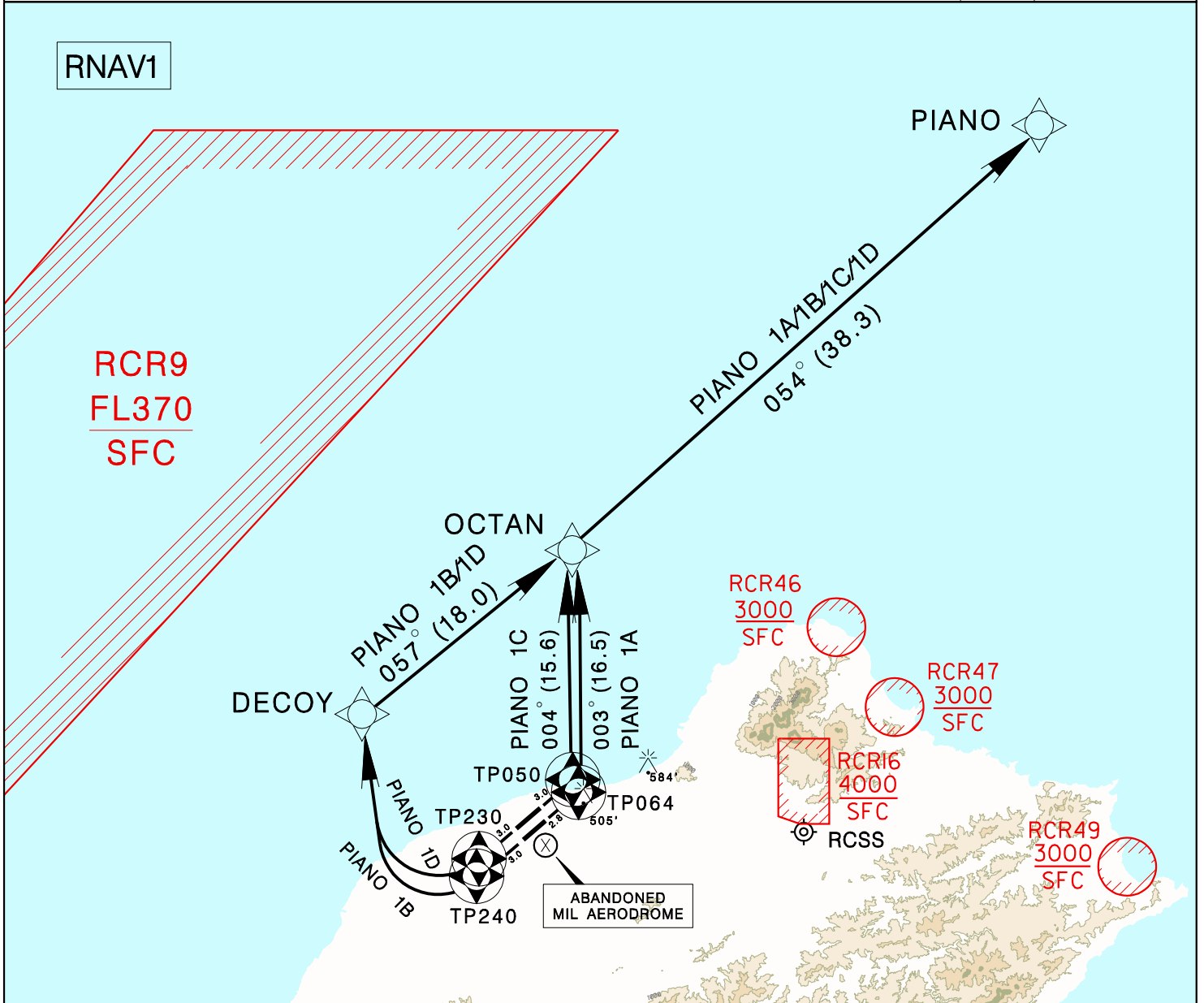
臺灣桃園國際機場

TAIPEI/TAIWAN TAOYUAN INTL AD

PIANO 1A RNAV(RWY05R)/PIANO 1C RNAV(RWY05L)
PIANO 1B RNAV(RWY23L)/PIANO 1D RNAV(RWY23R)

RCTP SID

TAIPEI APP 125.1 128.5	TAIPEI TWR 118.7 129.3	ATIS 127.6	VAR 5° W 	 MSA ARP 25NM
Apt Elev: 108'	Trans Level: FL130	Trans Alt: 11,000'		
BEARINGS ARE MAGNETIC; DISTANCES ARE NAUTICAL MILES; ELEVATIONS, HEIGHTS IN FEET				



REV: 1.RECHART 2.C/G FOR RWY05R CHG TO 4.7%

<p>PIANO ONE ALFA RNAV DEPARTURE Climb on RWY HDG until leaving 600ft, then direct to TP064, OCTAN, PIANO.</p> <p>PIANO ONE CHALI RNAV DEPARTURE Climb on RWY HDG until leaving 600ft, then direct to TP050, OCTAN, PIANO.</p>	<p>NOTE</p> <ol style="list-style-type: none"> RWY 23R/23L: speed restriction of 210KT IAS maximum until established on track to DECOY. Minimum climb gradients required: RWY 05L: 4.1%(250 ft/NM) until TP050 RWY 05R: 4.7%(286 ft/NM) until OCTAN RWY 23L: 3.4%(210 ft/NM) until TP240 Radar monitoring required.
<p>PIANO ONE BRAVO RNAV DEPARTURE Climb on RWY HDG until leaving 600ft, then direct to TP240, DECOY, OCTAN, PIANO. Cross OCTAN at or above 8000ft.</p> <p>PIANO ONE DELTA RNAV DEPARTURE Climb on RWY HDG until leaving 600ft, then direct to TP230, DECOY, OCTAN, PIANO. Cross OCTAN at or above 8000ft.</p>	