

TAIPEI ACC 127.9 129.1	KAOHSIUNG APP 124.7 125.7	ATIS 127.8	VAR 3° W 		
Apt Elev: 31'		Trans Level: FL130			Trans Alt: 11,000'

BEARINGS ARE MAGNETIC; DISTANCES ARE NAUTICAL MILES; ELEVATIONS, HEIGHTS IN FEET

PARPA TWO FOXTROT ARR (PR2F)  
 PARPA ONE KILO ARR (PR1K)

VOR/DME  
 SIGANG  
 113.3 CH80X TNN

NDB  
 375 NN

DME  
 109.8 CH35X NNN

RCAY

RCRA

RCR2  
 1000 SFC

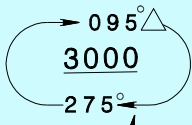
RCSQ  
 RCDC

DME  
 108.3 CH20X IKHG

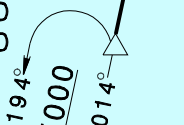
DME  
 109.7 CH34X IKAS

330 L SK

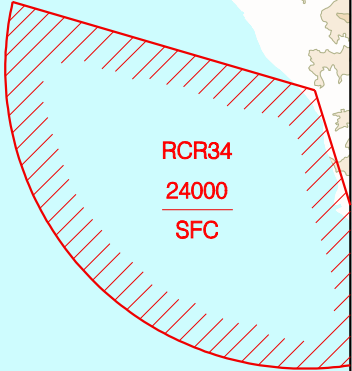
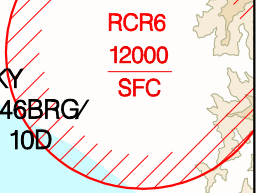
KIZIN  
 TNN R-194/33.5D  
 NN 014BRG/NNN 33.5D  
 SK 275BRG/IKHG 13.7D



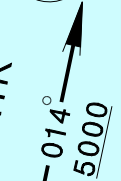
ORION  
 TNN R-194/45.5D  
 NN 014BRG/NNN 45.5D



FORKY  
 SK 146BRG/  
 IKAS 10D

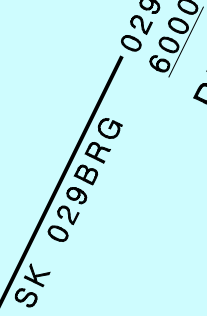


PR1K



HDG  
 350

PR2F



PARPA  
 HCN R-281/45D  
 KW 281BRG/HCN 45D  
 TNN R-191/67D  
 NN 011BRG/NNN 67D

VOR/DME  
 HENGCHUN  
 113.7 CH84X HCN

NDB  
 415 KW

REV: CHG PR1F TO PR2F, FORKY INFO

PR2F:  
 Depart PARPA, track SK 029BRG to join IKAS 10DME arc to FORKY.  
 PR1K:  
 Depart PARPA, HDG 350 to track TNN R-194/NN 014BRG to KIZIN.