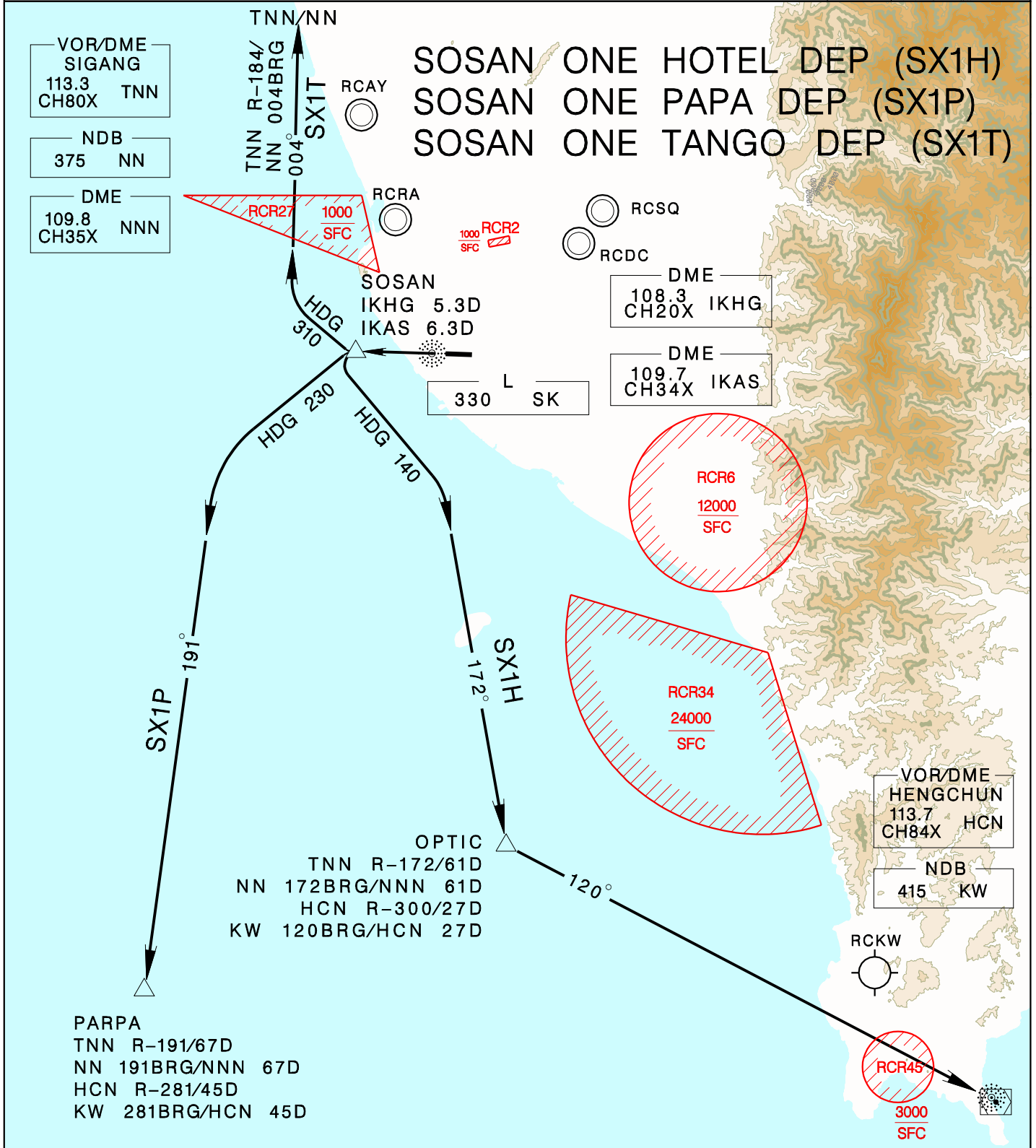


KAOHSIUNG APP 124.7 125.7	KAOHSIUNG TWR 118.7 120.7	ATIS 127.8	VAR 3° W ↑	
Apt Elev: 31'		Trans Level: FL130		
BEARINGS ARE MAGNETIC; DISTANCES ARE NAUTICAL MILES; ELEVATIONS, HEIGHTS IN FEET				



SX1H:
Climb on RWY HDG until SOSAN, then turn left HDG 140 to track TNN R-172/NN 172BRG to OPTIC, then track HCN R-300/KW 120BRG to HCN/KW.

SX1P:
Climb on RWY HDG until SOSAN, then turn left HDG 230 to track TNN R-191/NN 191BRG to PARPA.

SX1T:
Climb on RWY HDG until SOSAN, then turn right HDG 310 to track TNN R-184/NN 004BRG to TNN/NN.

1. Minimum climb gradient required: 4% (245ft/NM) until 2,000ft.
2. Caution: pier cranes, terrain and stacks east, west and south of airport.

REV: CHG SOSAN INFO