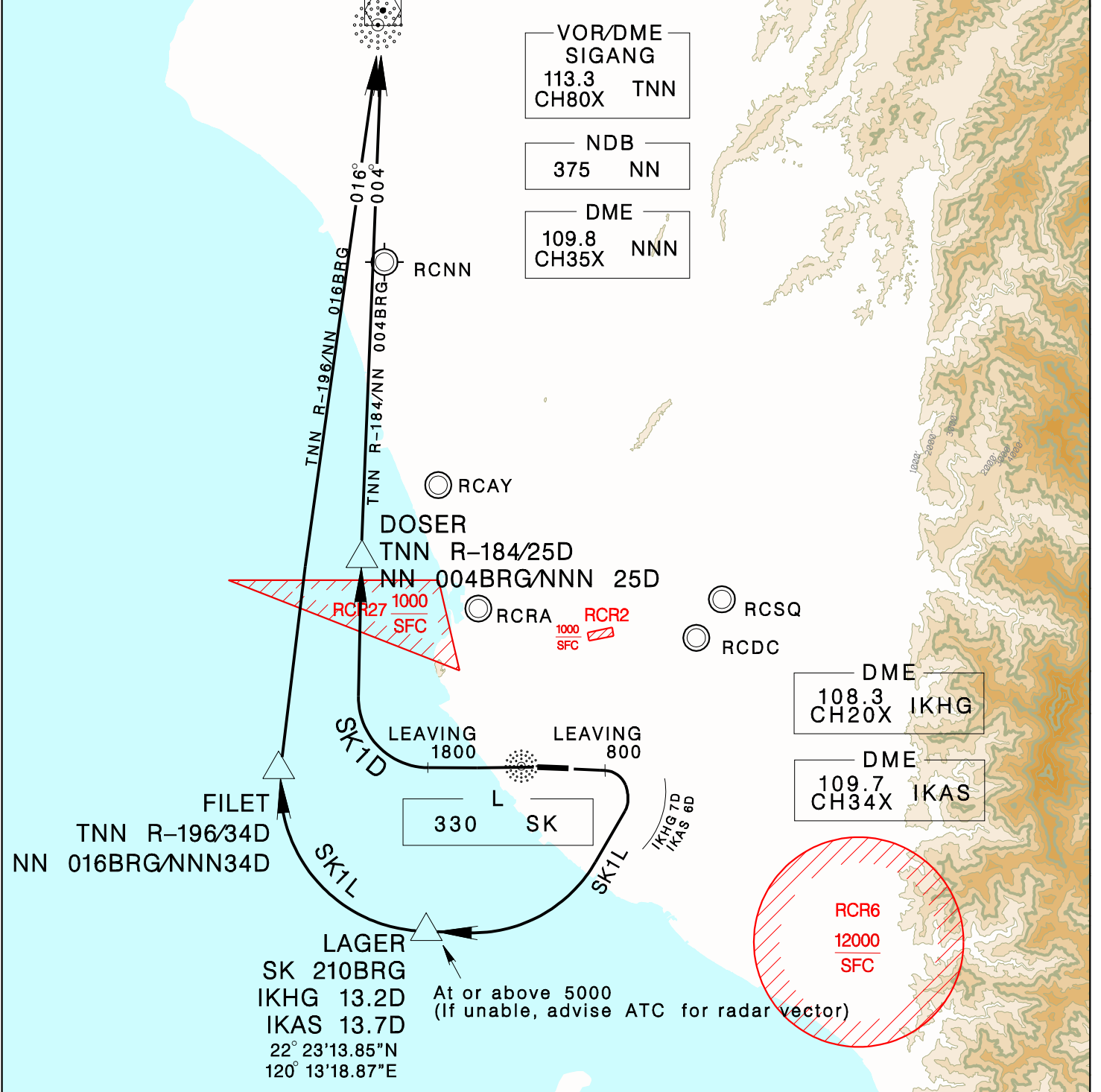


KAOHSIUNG APP 124.7 125.7	KAOHSIUNG TWR 118.7 120.7	ATIS 127.8	VAR 3° W ↑	 MSA SK 25NM
Apt Elev: 31'		Trans Level: FL130		
		Trans Alt: 11,000'		
BEARINGS ARE MAGNETIC; DISTANCES ARE NAUTICAL MILES; ELEVATIONS, HEIGHTS IN FEET				

SIGANG ONE DELTA DEP (SK1D)  
SIGANG ONE LIMA DEP (SK1L)



REV: CHG LAGER INFO, CHG SK1L TURN RESTRICTION INFO

**SK1L:**(for RWY09)  
Climb on RWY HDG until leaving 800ft, then turn right direct LAGER, complete the turn within 7D from IKHG (IKAS 6D), cross LAGER at or above 5000ft, then turn right to track TNN R-196NN 016BRG to FILET then TNNNN.

**SK1D:**(for RWY27)  
Climb on RWY HDG until leaving 1,800ft, then turn right to track TNN R-184NN 004BRG to DOSER then TNNNN.

1. Minimum climb gradient required  
SK1L: 6% (365ft/NM) until 2,000ft.  
SK1D: 4% (245ft/NM) until 2,000ft.
2. Caution: pier cranes, terrain and stacks east, west and south of the airport.
3. No turn before DER.