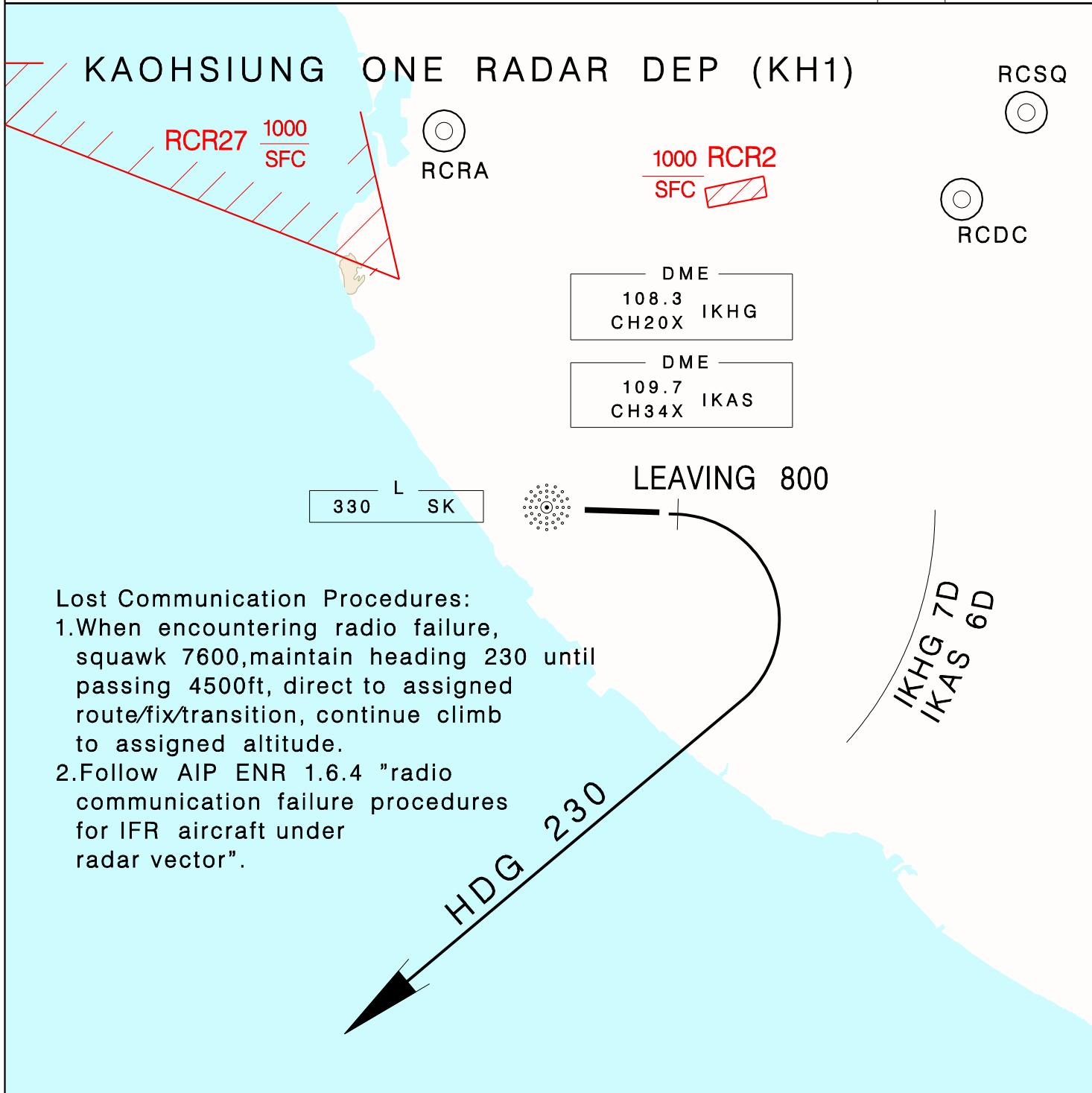


KAOHSIUNG APP 124.7 125.7	KAOHSIUNG TWR 118.7 120.7	ATIS 127.8	
Apt Elev: 31'	Trans Level: FL130	Trans Alt: 11,000'	
BEARINGS ARE MAGNETIC; DISTANCES ARE NAUTICAL MILES; ELEVATIONS, HEIGHTS IN FEET			



REV: CHG TURN RESTRICTION INFO

<p>Climb on RWY HDG until leaving 800ft, then turn right HDG 230, complete the turn within 7DME from IKHG (IKAS 6D), climb to ATC assigned altitude for vectors to assigned route/fix.</p>	<ol style="list-style-type: none"> <li>1. Minimum climb gradient required: 6% (365ft/NM) until 2,000ft.</li> <li>2. Caution: pier cranes, terrain and stacks east, west and south of the airport.</li> <li>3. No turn before DER.</li> </ol>
--	--