

# 高雄國際機場 KAOHSIUNG INTL AD

RCKH  
ILS RWY27

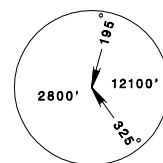
KAOHSIUNG APP  
124.7 125.7

KAOHSIUNG TWR  
118.7 120.7

ATIS  
127.8

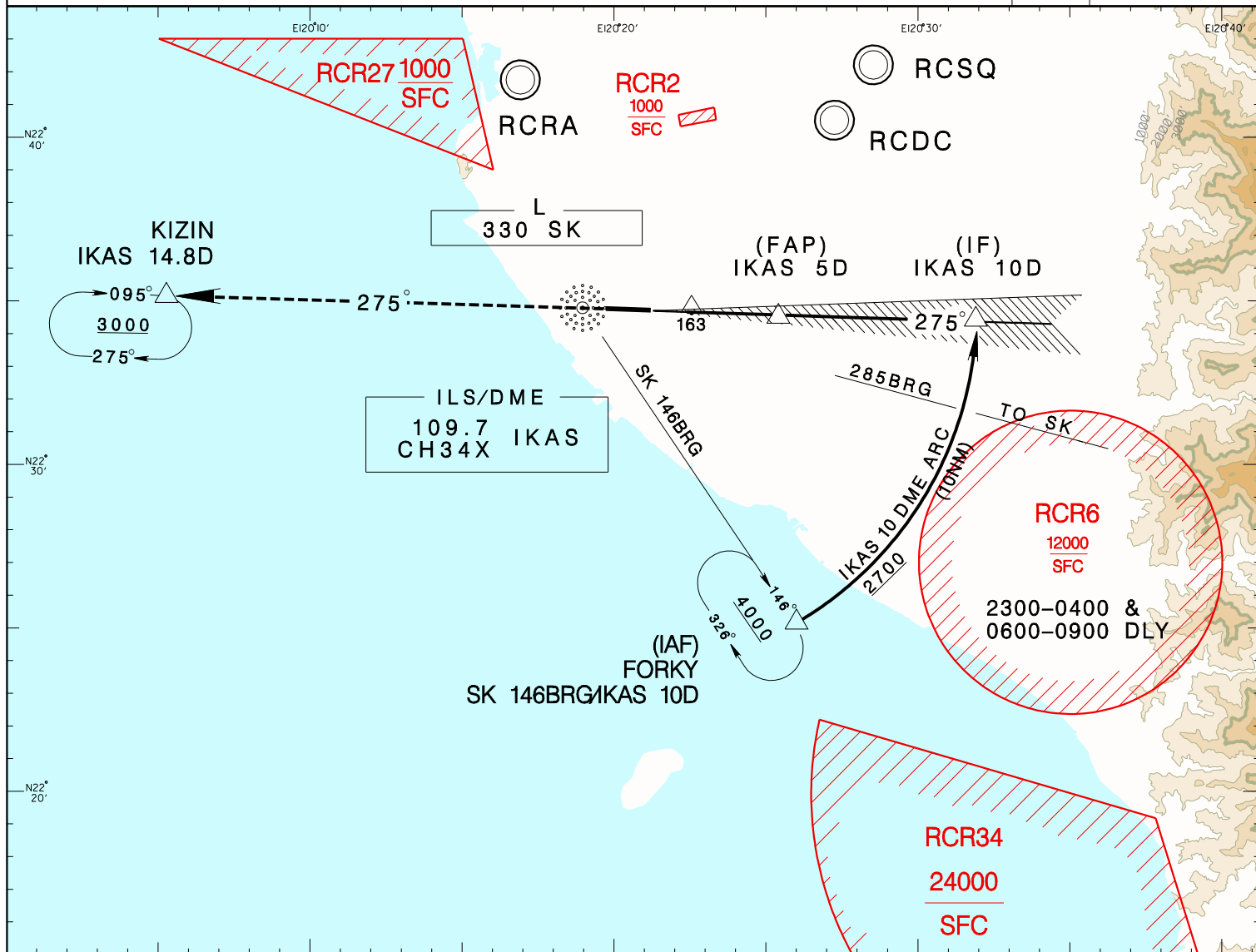
Apt Elev: 31' Rwy27 THR Elev: 30' Trans Level: FL130 Trans Alt: 11,000'

VAR 3° W



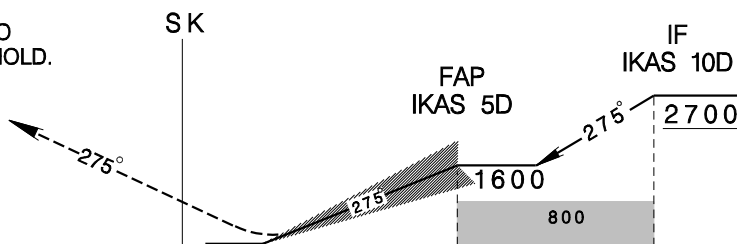
MSA SK 25NM

BEARINGS ARE MAGNETIC; DISTANCES ARE NAUTICAL MILES; ELEVATIONS, HEIGHTS IN FEET



MISSED APCH:  
CLIMB DIRECT TO SK,  
THEN TRACK SK 275BRG TO  
KIZIN, MAINTAIN 3000 AND HOLD.

GP 3°  
RDH 57



5 0 5 10 NM FROM IKAS DME

MINIMA (OCA IN FT, VIS IN M, OCH IN FT)

| CATEGORY    | A                        | B                        | C                        | D                        |
|-------------|--------------------------|--------------------------|--------------------------|--------------------------|
| STRAIGHT IN | 293/ 1300<br>RVR1400 263 | 305/ 1300<br>RVR1400 275 | 313/ 1400<br>RVR1400 283 | 324/ 1400<br>RVR1400 294 |

1. CIRCLING NOT AUTHORIZED.
2. THE INITIAL APCH ARC INFRINGES RCR-6 AREA, PRIOR COORDINATION WITH CAF WILL BE COMPLETED BY ATC BEFORE ISSUING CLEARANCE DURING RCR-6 ACTIVE HOURS.

\* DME REQUIRED

REV: NEW CHART