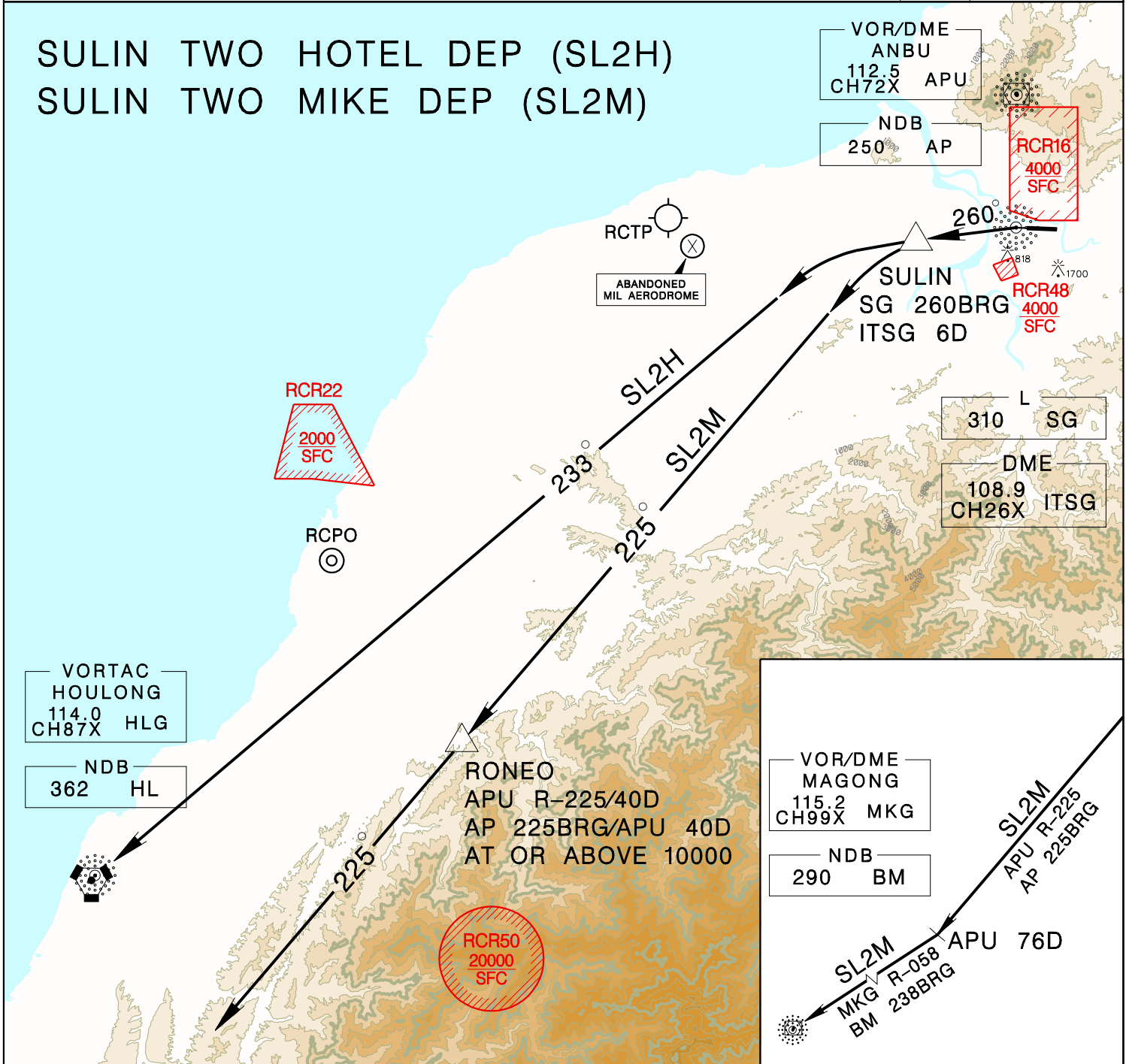


TAIPEI APP 119.7 119.6	SONGSHAN TWR 118.1	ATIS 127.4 341	VAR 4° W
Apt Elev: 18' Trans Level: FL130 Trans Alt: 11,000'			
BEARINGS ARE MAGNETIC; DISTANCES ARE NAUTICAL MILES; ELEVATIONS, HEIGHTS IN FEET			

SULIN TWO HOTEL DEP (SL2H)
SULIN TWO MIKE DEP (SL2M)



SL2H

Depart via SG 260BRG to SULIN,
then track HLG R-053/HL 233BRG to HLG/HL.

SL2M

Depart via SG 260BRG to SULIN,
then track APU R-225/AP 225BRG,
cross RONEO at or above 10,000ft,
then track MKG R-058/BM 238BRG to MKG/BM.

1. Minimum climb gradient required 7.4% (450ft/NM) until 4,000ft.
2. Caution high terrain around airport.
3. A 1700ft-high BLDG at 2.1NM south of THR 28.
4. A 818ft-high BLDG at 2 NM SW of THR 10.