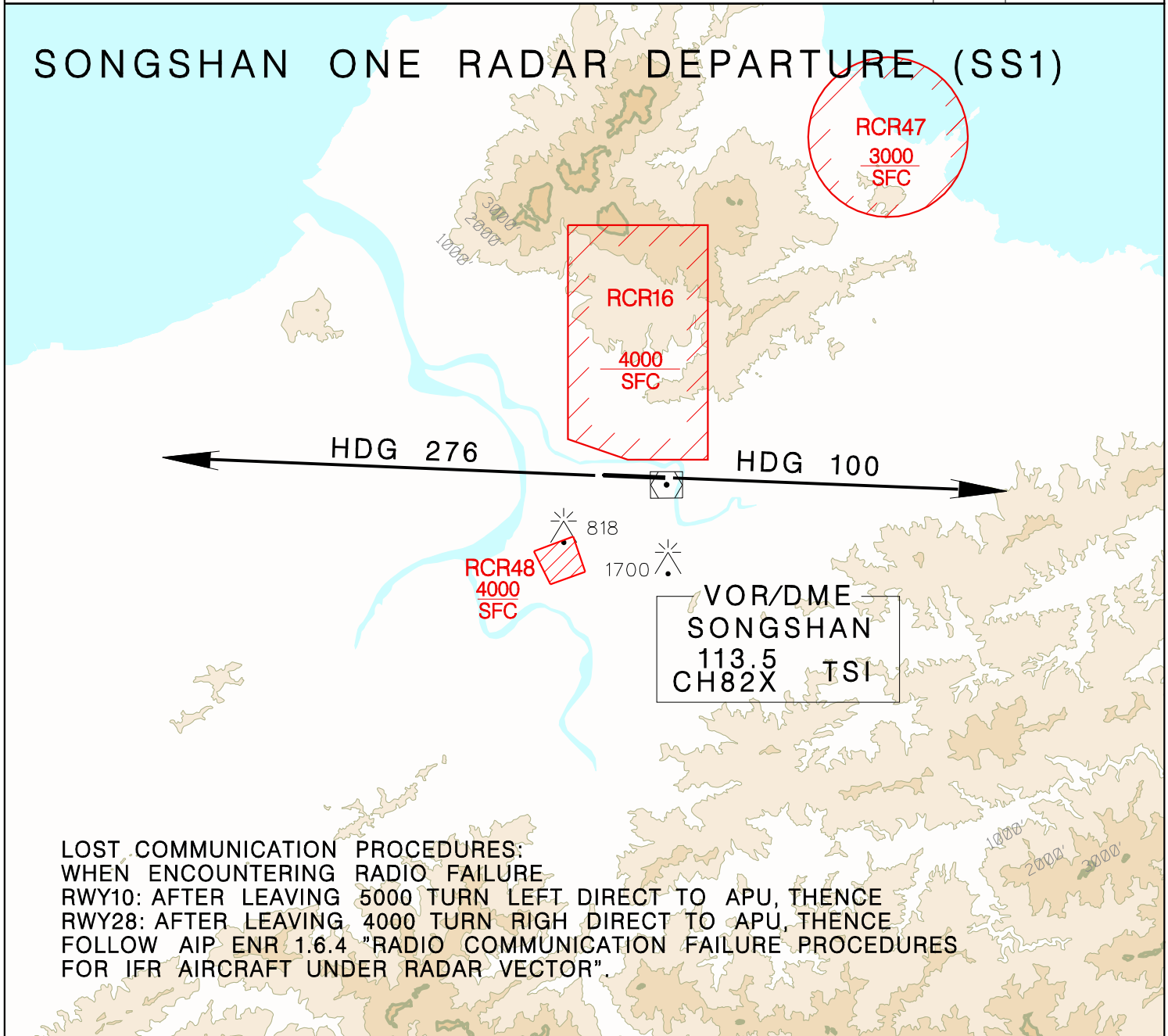


TAIPEI APP 119.7 119.6	SONGSHAN TWR 118.1	ATIS 127.4 341	VAR 4° W ↑	
Apt Elev: 18'	Trans Level: FL130	Trans Alt: 11,000'		
BEARINGS ARE MAGNETIC; DISTANCES ARE NAUTICAL MILES; ELEVATIONS, HEIGHTS IN FEET				

SONGSHAN ONE RADAR DEPARTURE (SS1)



LOST COMMUNICATION PROCEDURES:
WHEN ENCOUNTERING RADIO FAILURE
RWY10: AFTER LEAVING 5000 TURN LEFT DIRECT TO APU, THENCE
RWY28: AFTER LEAVING 4000 TURN RIGHT DIRECT TO APU, THENCE
FOLLOW AIP ENR 1.6.4 "RADIO COMMUNICATION FAILURE PROCEDURES FOR IFR AIRCRAFT UNDER RADAR VECTOR".

REV: NO CHANGE

RWY10:
Depart HDG 100 climbing to ATC assigned altitude for vectors to assigned route/fix.

RWY28:
Depart HDG 276 climbing to ATC assigned altitude for vectors to assigned route/fix.

1. Minimum climb gradient required:
RWY10: 7.0% (425ft/NM) until 4,000ft
RWY28: 7.4% (450ft/NM) until 4,000ft
2. Caution high terrain around airport.
3. A 1700ft-high BLDG at 2.1NM south of THR 28.
4. A 818ft-high BLDG at 2 NM SW of THR 10.