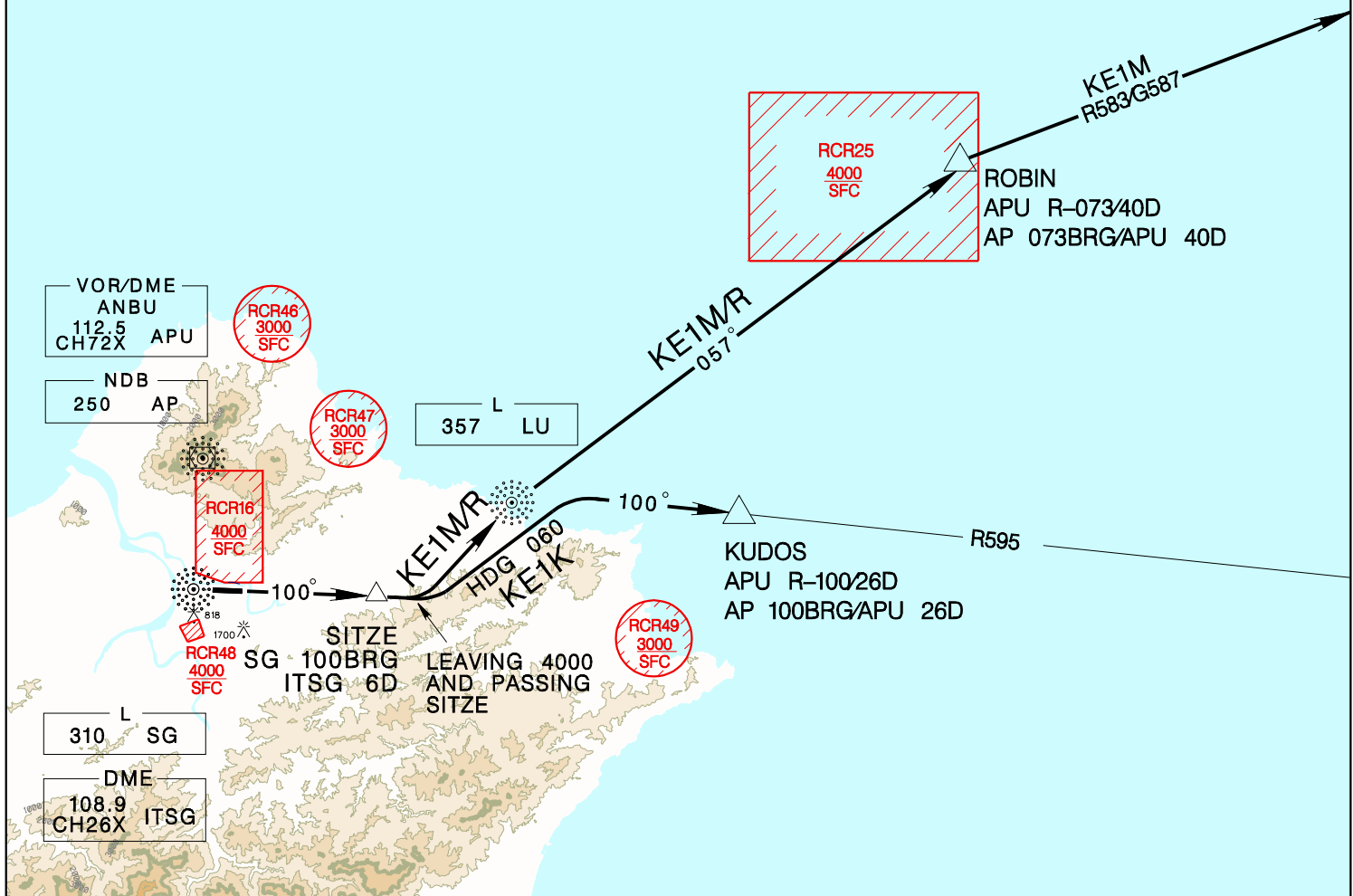
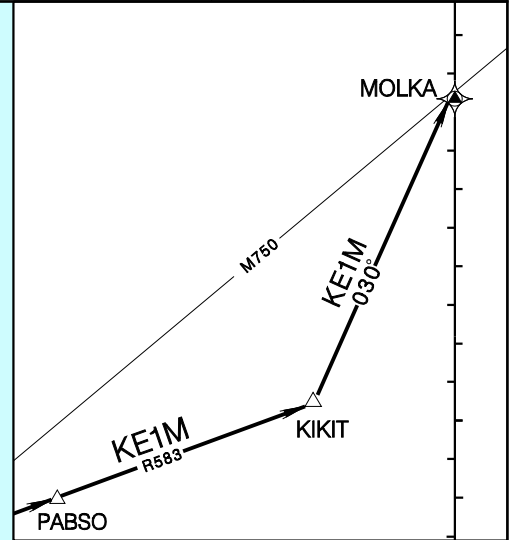


TAIPEI APP 119.7 119.6	SONGSHAN TWR 118.1	ATIS 127.4 341	VAR 4° W 
Apt Elev: 18'	Trans Level: FL130	Trans Alt: 11,000'	
BEARINGS ARE MAGNETIC; DISTANCES ARE NAUTICAL MILES; ELEVATIONS, HEIGHTS IN FEET			

KEELUNG ONE KILO DEP (KE1K)  
KEELUNG ONE MIKE DEP (KE1M)  
KEELUNG ONE ROMEO DEP (KE1R)



REV: NO CHANGE

<p><b>KE1K</b> Depart via SG 100BRG to SITZE, after leaving 4,000ft and passing SITZE, turn left HDG 060 to track APU R-100/AP 100BRG to KUDOS.</p> <p><b>KE1M</b> Depart via SG 100BRG to SITZE, after leaving 4,000ft and passing SITZE, direct to LU, track LU 057BRG to ROBIN, join R583 to KIKIT, then direct to MOLKA.</p> <p><b>KE1R</b> Depart via SG 100BRG to SITZE, after leaving 4,000ft and passing SITZE, direct to LU, track LU 057BRG to ROBIN.</p>	<ol style="list-style-type: none"> <li>1. Minimum climb gradient required 7.0% (425ft/NM) until 4,000ft.</li> <li>2. Caution high terrain around airport.</li> <li>3. A 1700ft-high BLDG at 2.1NM south of THR 28.</li> <li>4. A 818ft-high BLDG at 2 NM SW of THR 10.</li> </ol>
---	---