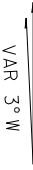
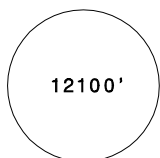
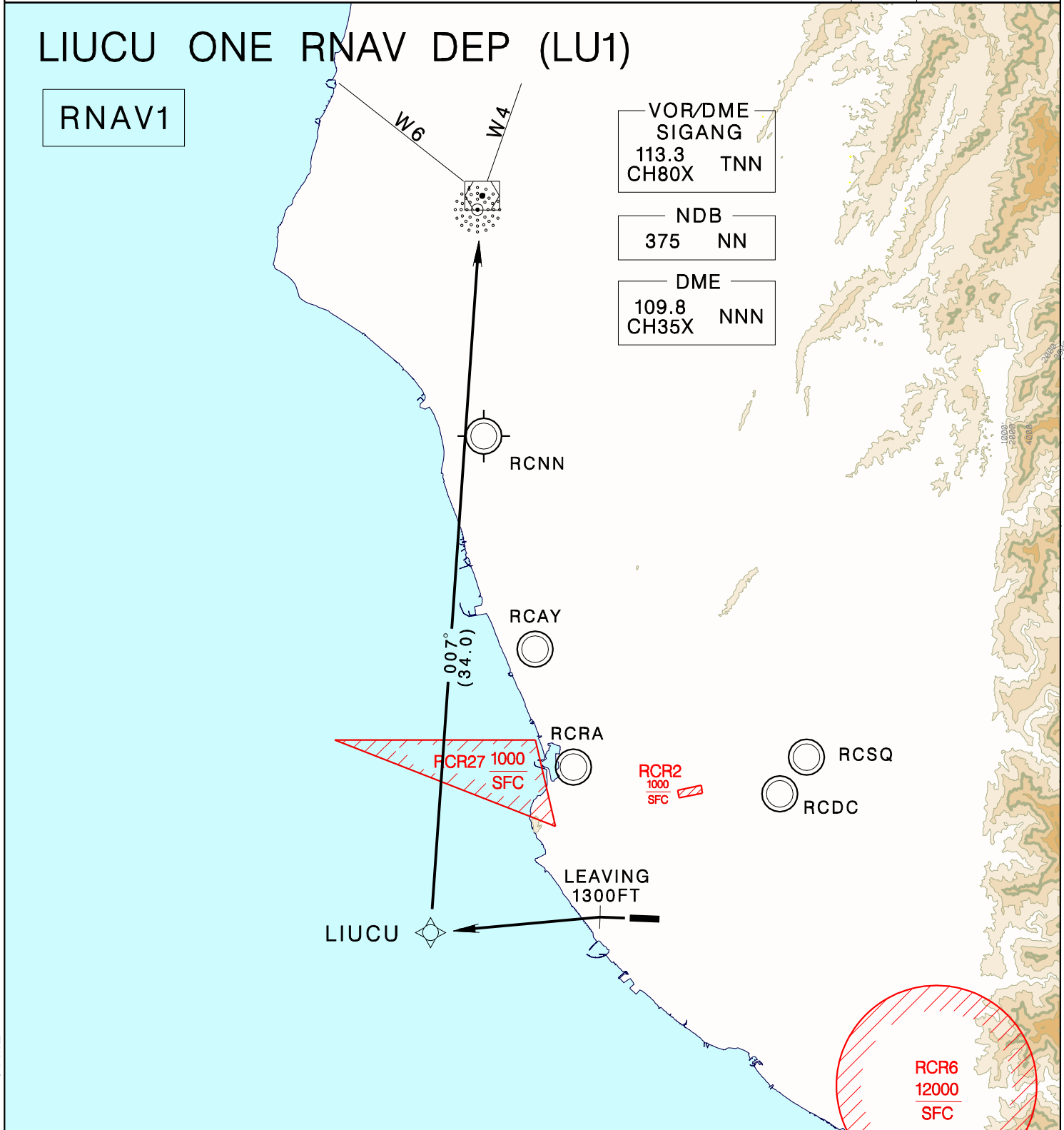


KAOHSIUNG APP 124.7 125.7	KAOHSIUNG TWR 118.7 120.7	ATIS 127.8	 VAR 3° W	 12100' MSA ARP 25NM
Apt Elev: 31'	Trans Level: FL130	Trans Alt: 11,000'		
BEARINGS ARE MAGNETIC; DISTANCES ARE NAUTICAL MILES; ELEVATIONS, HEIGHTS IN FEET				



REV: CHG TNN VORTAC TO VOR/DME

Climb on RWY HDG until leaving 1300ft, then direct to LIUCU, then to TNN.

1. Minimum climb gradient required: 4% (245ft/NM) until 1,300ft.
2. Caution: pier cranes, terrain and stacks east, west and south of the airport.
3. Critical DME & DME gap not surveyed.
4. Radar monitoring required.