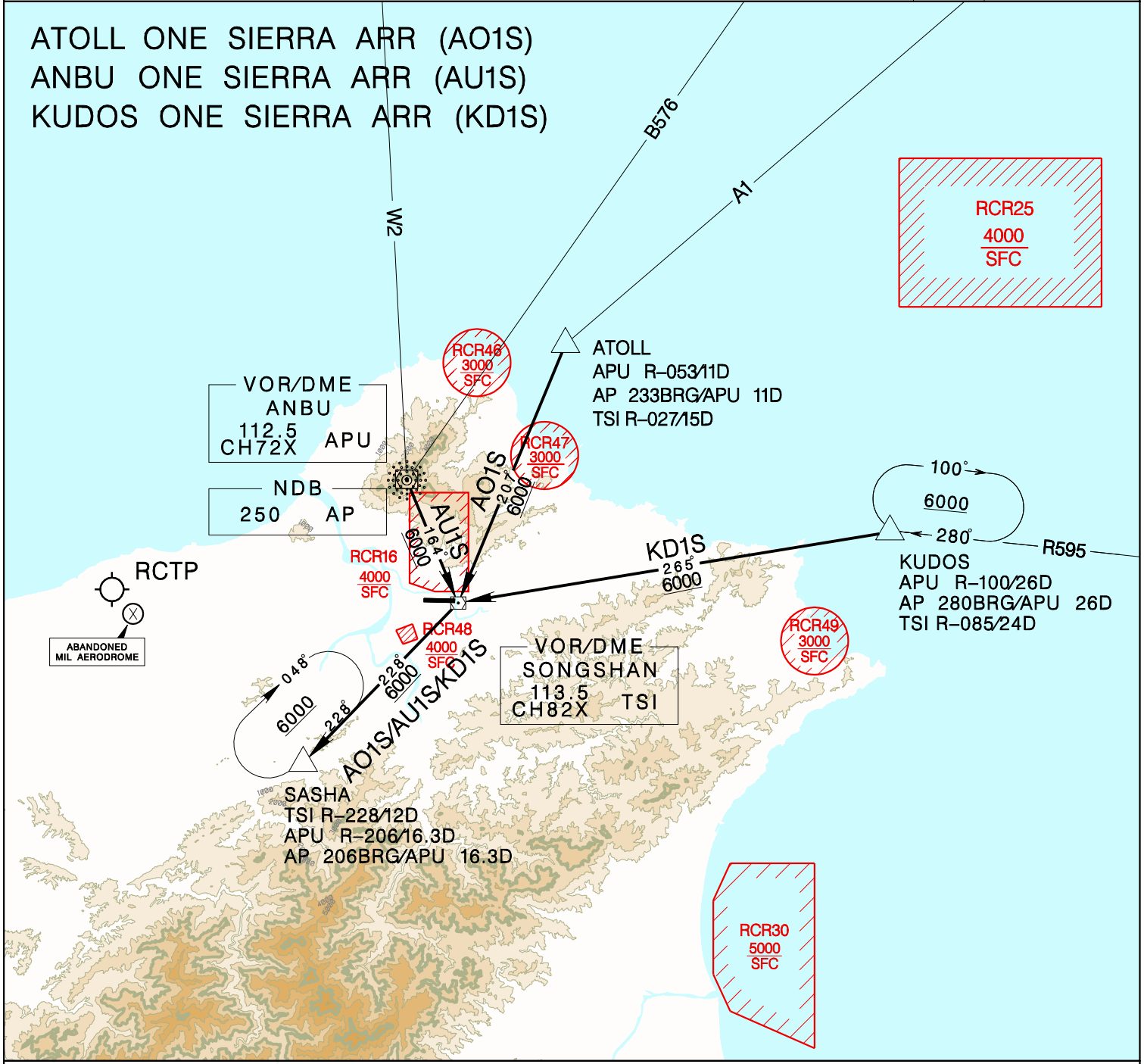


臺北/松山機場
TAIPEI/SONGSHAN AD

RCSS
STAR

TAIPEI ACC 125.5 123.6	TAIPEI APP 119.7 119.6	ATIS 127.4 341	VAR 4° W
Apt Elev: 18' Trans Level: FL130 Trans Alt: 11,000'			
BEARINGS ARE MAGNETIC; DISTANCES ARE NAUTICAL MILES; ELEVATIONS, HEIGHTS IN FEET			



FOR RWY10:
 AO1S: Depart ATOLL, direct to TSI, then track TSI R-228 to SASHA.
 AU1S: Depart APU, direct to TSI, then track TSI R-228 to SASHA.
 KD1S: Depart KUDOS, direct to TSI, then track TSI R-228 to SASHA.

REV: NO CHANGE