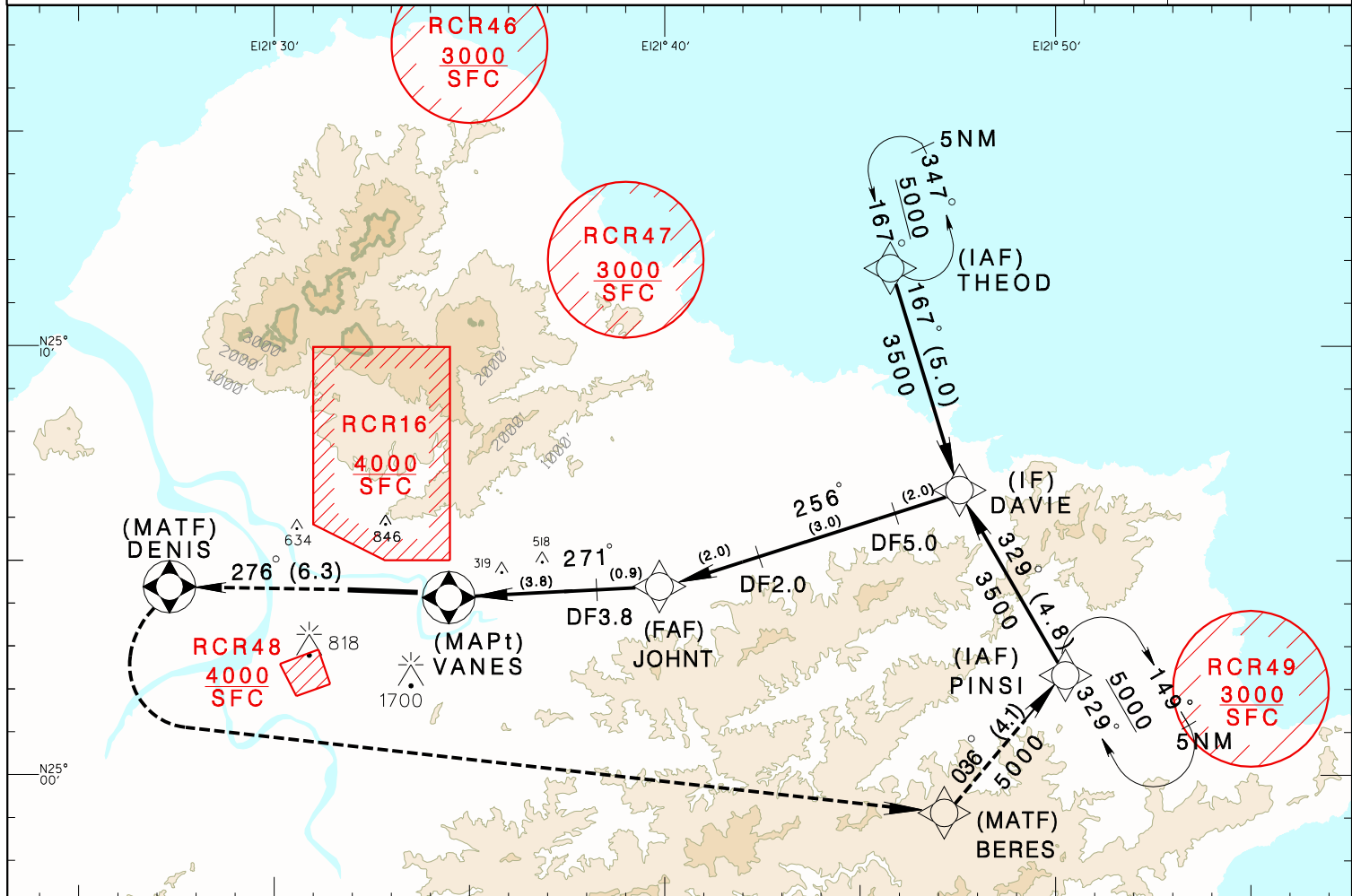


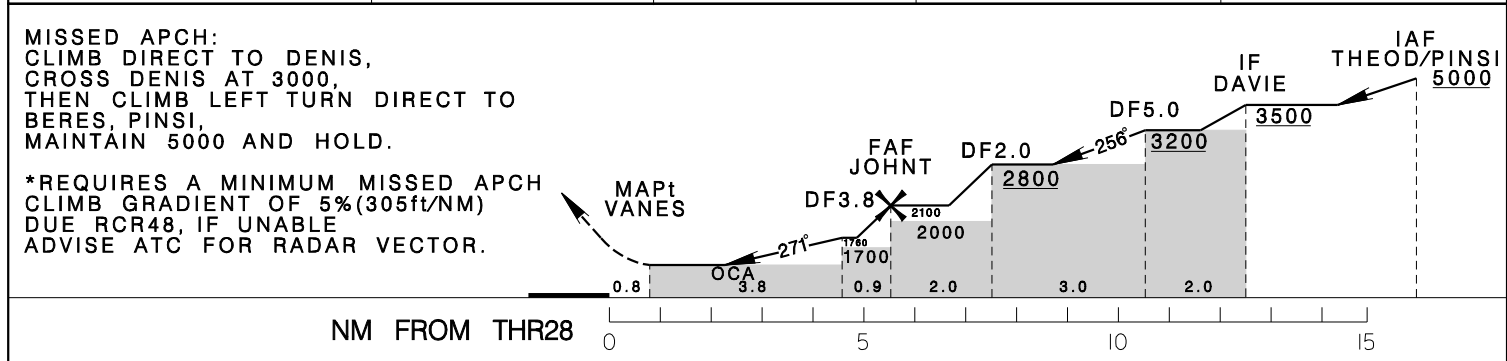
臺北/松山機場 TAIPEI/SONGSHAN AD

RCSS
RNAV (GNSS) RWY28

TAIPEI APP 119.7 119.6	SONGSHAN TWR 118.1	ATIS 127.4 341		
Apt Elev: 18'	Rwy28 THR Elev: 14'	Trans Level: FL130		Trans Alt: 11,000'
BEARINGS ARE MAGNETIC; DISTANCES ARE NAUTICAL MILES; ELEVATIONS, HEIGHTS IN FEET				



DIST to THR28	2NM	3NM	4NM	5NM
ADVISORY ALT	800	1170	1540	1910



MINIMA (OCA IN FT, VIS IN M, OCH IN FT)				
---	--	--	--	--

CATEGORY	A	B	C	D
LNAV	790/3600 772			

- CIRCLING NOT AUTHORIZED.
- DESCENT ANGLE FROM FAF IS 3.49°, NOT COINCIDENT WITH PAPI.
- FINAL APCH COURSE INTERCEPTS RWY CL EXTENSION AT 0.8NM FROM THRESHOLD WITH 5° OFFSET.
- A 1700ft-HIGH BLDG AT 2.1NM SOUTH OF THR28.
- A 818ft-HIGH BLDG AT 2NM SW OF THR10.
- ALL INITIAL APCH TRUNS ARE LIMITED TO 210KT IAS.
- DME/DME RNAV NOT AUTHORIZED.
- DF MAY NOT BE CODED INTO ALL MODELS OF FMS. PILOT SHALL CHECK MANUALLY AND INDEPENDENTLY THE ASSOCIATED ALT AND DIST INFO WITH THE DF CONCERNED.
- CAUTION OBSTACLES UP TO 301FT PENETRATE THE VISUAL SEGMENT SURFACE (VSS).

REV: NO CHANGE