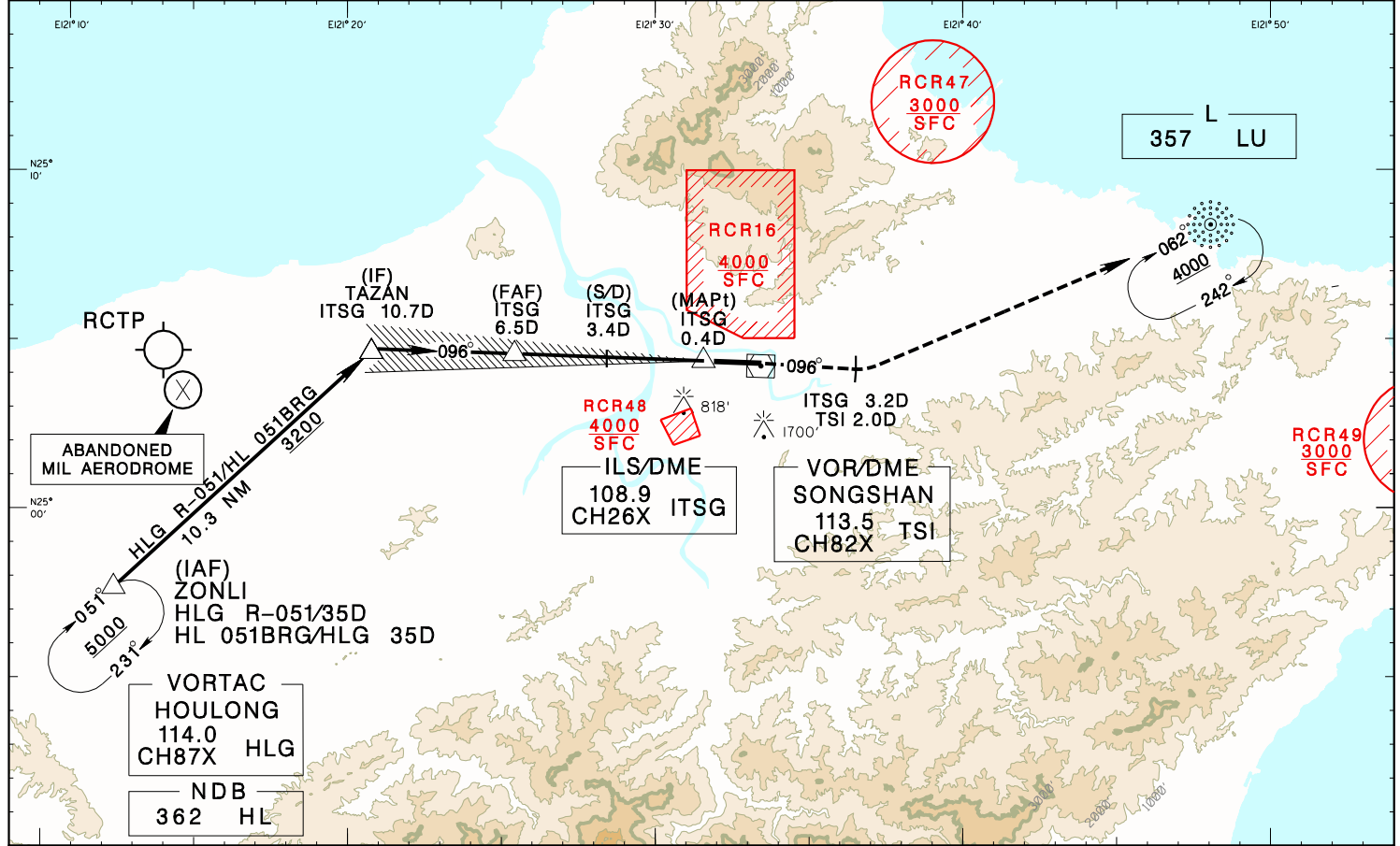


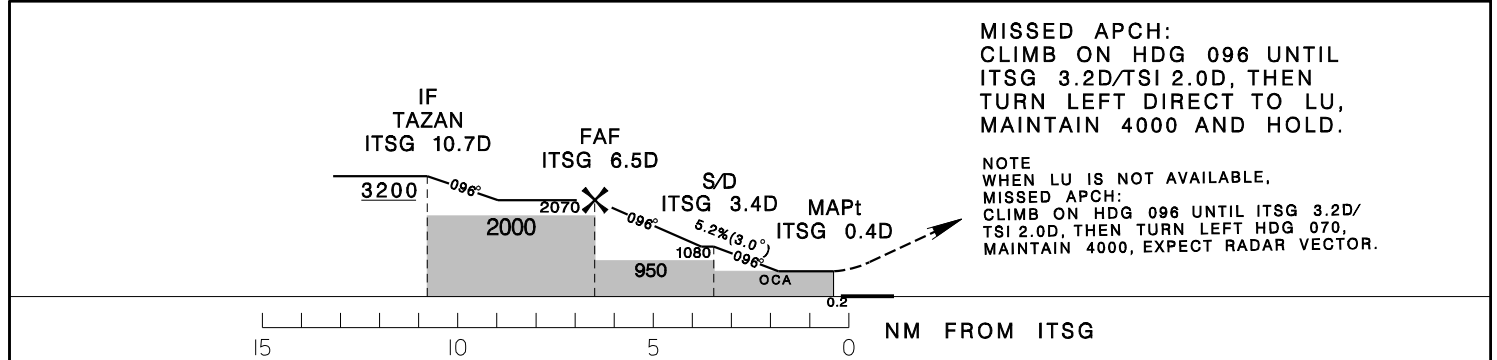
# 臺北/松山機場 TAIPEI/SONGSHAN AD

RCSS  
LOC RWY10

|  |                       |                    |  |                    |
|--|-----------------------|--------------------|--|--------------------|
| TAIPEI APP<br>119.7 119.6  | SONGSHAN TWR<br>118.1 | ATIS<br>127.4 341  |  |                    |
| Apt Elev: 18'  | Rwy10 THR Elev: 13'   | Trans Level: FL130 |  | Trans Alt: 11,000' |
| BEARINGS ARE MAGNETIC; DISTANCES ARE NAUTICAL MILES; ELEVATIONS, HEIGHTS IN FEET |                       |                    |  |                    |



|      |      |      |      |      |              |
|------|------|------|------|------|--------------|
| 6DME | 5DME | 4DME | 3DME | 2DME | DIST to ITSG |
| 1910 | 1590 | 1270 | 950  | 640  | ADVISORY ALT |



| MINIMA (OCA IN FT, VIS IN M, OCH IN FT) |  |                    |      |                      |     | <b>NOTE</b><br>1. A 1700ft-HIGH BUILDING AT 2.1 NM SOUTH OF THR 28.<br>2. A 818ft-HIGH BUILDING AT 2 NM SW OF THR 10.<br>3. CIRCLING ONLY AUTHORIZED FOR CAT A HELICOPTERS.<br><br>*DME REQUIRED. |
|---|--|--------------------|------|----------------------|-----|---|
| CATEGORY                                |  | A                  | B    | C                    | D   |   |
| STRAIGHT IN                             | MA minima<br>climb gradient<br>4% (244ft/NM)   | 550/800<br>RVR 750 | 532  | 550/1800             | 532 |   |
|   | MA minima<br>climb gradient<br>2.5% (152ft/NM) | 790/800<br>RVR 750 | 772  | 790/1200<br>RVR 1200 | 772 |   |
| STRAIGHT IN (ALS OUT)                   | MA minima<br>climb gradient<br>4% (244ft/NM)   | 550/1600           | 532  | 550/2500             | 532 |   |
|   | MA minima<br>climb gradient<br>2.5% (152ft/NM) | 790/1600           | 772  | 790/2000             | 772 |   |
| CIRCLING                                |  | 1180/3600          | 1162 | NA                   |     |   |

REV: MINIMA, MAPt POSITION