

儀器進場圖

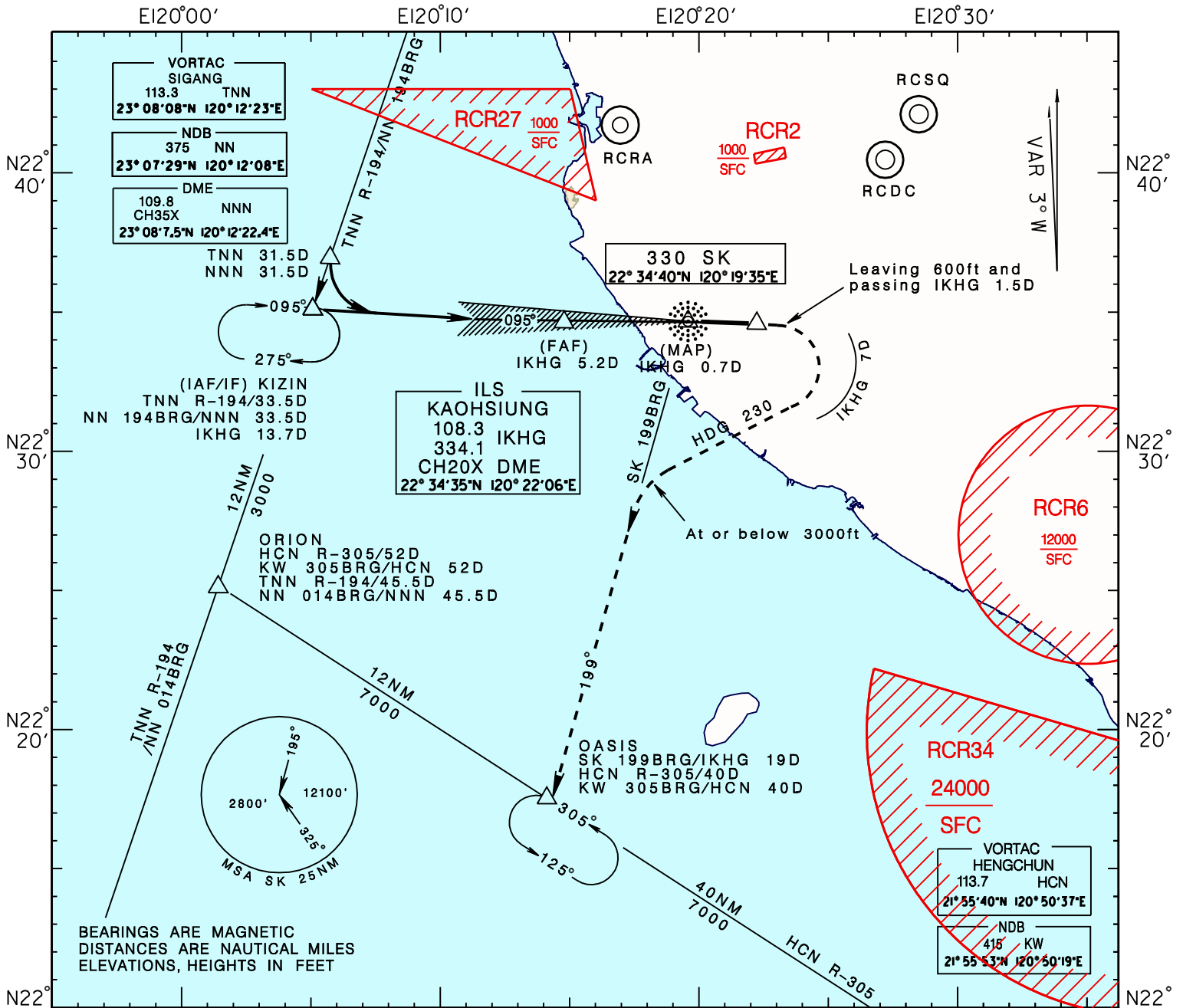
INSTRUMENT APPROACH CHART
 標高 31呎
 ELEV 31FT

TWR	118.7	121.9
APP	121.5	236.6
ATIS	124.7	328.7
	127.8	

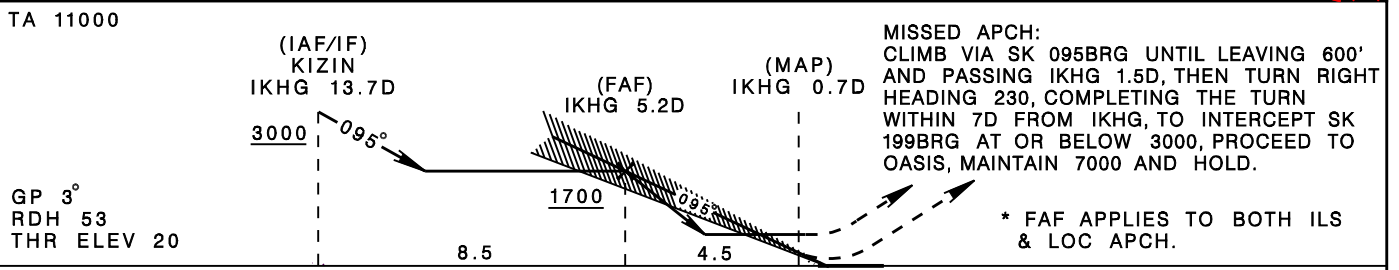
高雄/高雄機場
 KAOHSIUNG/KAOHSIUNG AD

-ILS RWY09
 "IKHG" "SK"

DME REQUIRED



BEARINGS ARE MAGNETIC
 DISTANCES ARE NAUTICAL MILES
 ELEVATIONS, HEIGHTS IN FEET



GP 3°
 RDH 53
 THR ELEV 20

MISSED APCH:
 CLIMB VIA SK 095BRG UNTIL LEAVING 600' AND PASSING IKHG 1.5D, THEN TURN RIGHT HEADING 230, COMPLETING THE TURN WITHIN 7D FROM IKHG, TO INTERCEPT SK 199BRG AT OR BELOW 3000, PROCEED TO OASIS, MAINTAIN 7000 AND HOLD.

* FAF APPLIES TO BOTH ILS & LOC APCH.

MINIMA (OCA IN FT, VIS IN M, OCH IN FT)

CATEGORY		A	B	C	D
ILS	FULL	220/800 RVR750 200	227/800 RVR750 207	235/800 RVR750 215	246/800 RVR750 226
	ALS OUT	220/1200 RVR1200 200	227/1200 RVR1200 207	235/1200 RVR1200 215	246/1200 RVR1200 226
LOC (GP OUT)	FULL	500/1200 RVR1200 480	500/1600 480	500/1600 480	500/1600 480
	ALS OUT	500/1600 480	500/1600 480	500/2200 480	500/2200 480
CIRCLING		630/1600 599	770/1600 739	910/4000 879	910/4400 879

NOTE:
 CIRCLING NOT AUTHORIZED
 NORTH OF RWY.

REV: RENAME AS ILS RWY09